

The background is a collage of industrial images: blue electric motors, large metal gears, and a worker in a hard hat and safety vest using a laptop. A white geometric grid is overlaid on the entire image.

FLUKE®

Reliability

Introduction to eMaint CM

Fluke Reliability's Condition Monitoring
Solution Platform

Best Practices Webinar Series

Meet the Speakers



Michael DeMaria
CM Product Manager

30 years at Azima DLI

Background:
Naval Nuclear Engineering
Maintenance Operations
Engineering Lead Analyst
Program Management



Austin Anderson
Product Owner

3 years at Azima DLI

Background:
Professional Engineer
BS, MS Mechanical Engineering
Vibration / Shock R&D
Cat 3 Vibration Certification

POLL QUESTION No. 1



What is your familiarity with the current portal systems?

(Watchman Reliability Portal, Symphony PredictivePortal, eMaint CM portal)

- I have most familiarity with Watchman Reliability Portal
- I have most familiarity with Symphony PredictivePortal
- I have most familiarity with eMaint Condition Monitoring portal
- I am not well familiar with any of the portal systems

Fluke Reliability Solutions

FLUKE®

Reliability



World-class
hardware



Remote condition
monitoring services



Innovative
Software

Connecting Reliability Workflows

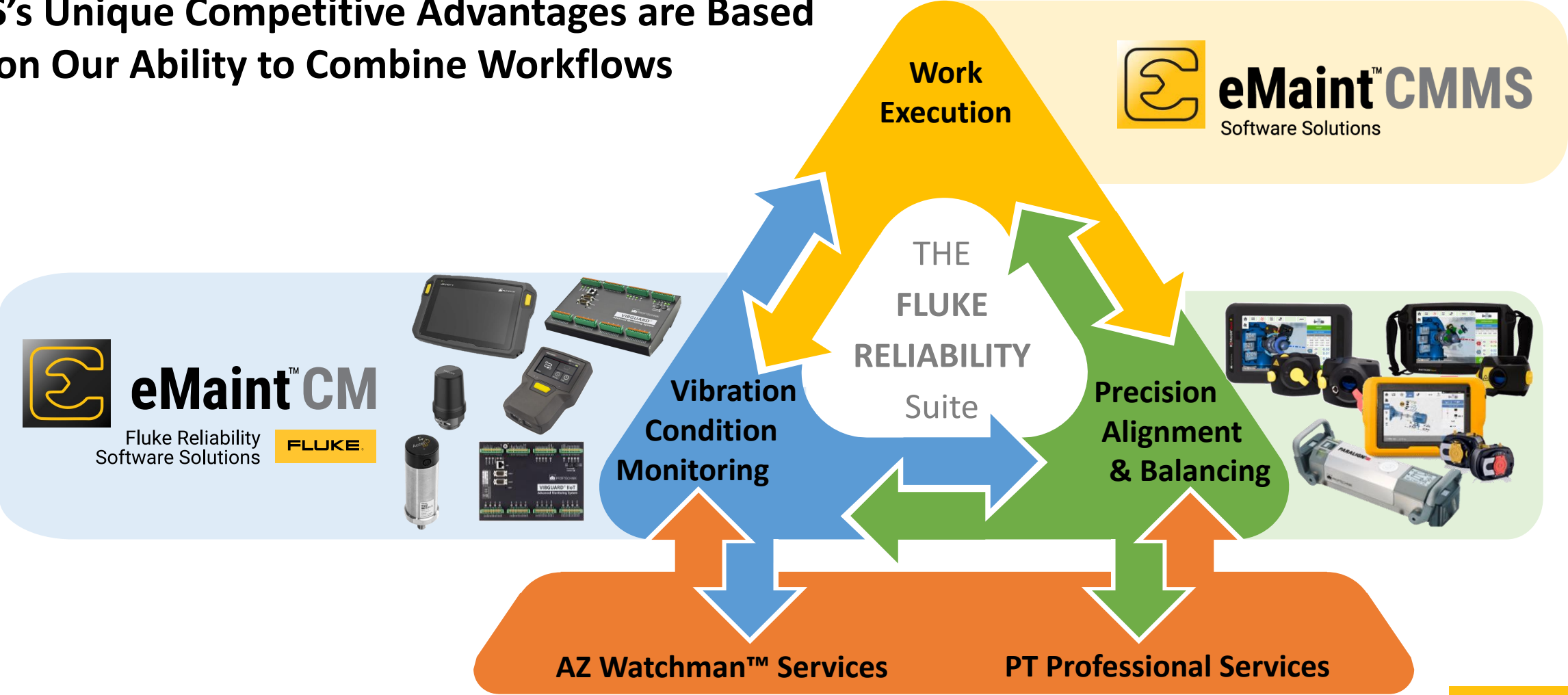
The Predictive Maintenance workflow illustrated below.



- Multi-technology
- Flexible Solutions
- Perpetual, at Scale
- All Decision Makers
- Business-level Metrics
- Diagnostic Automation
- Work Order Automation

No One Else Can Offer This Combined Solution

FRS's Unique Competitive Advantages are Based Upon Our Ability to Combine Workflows

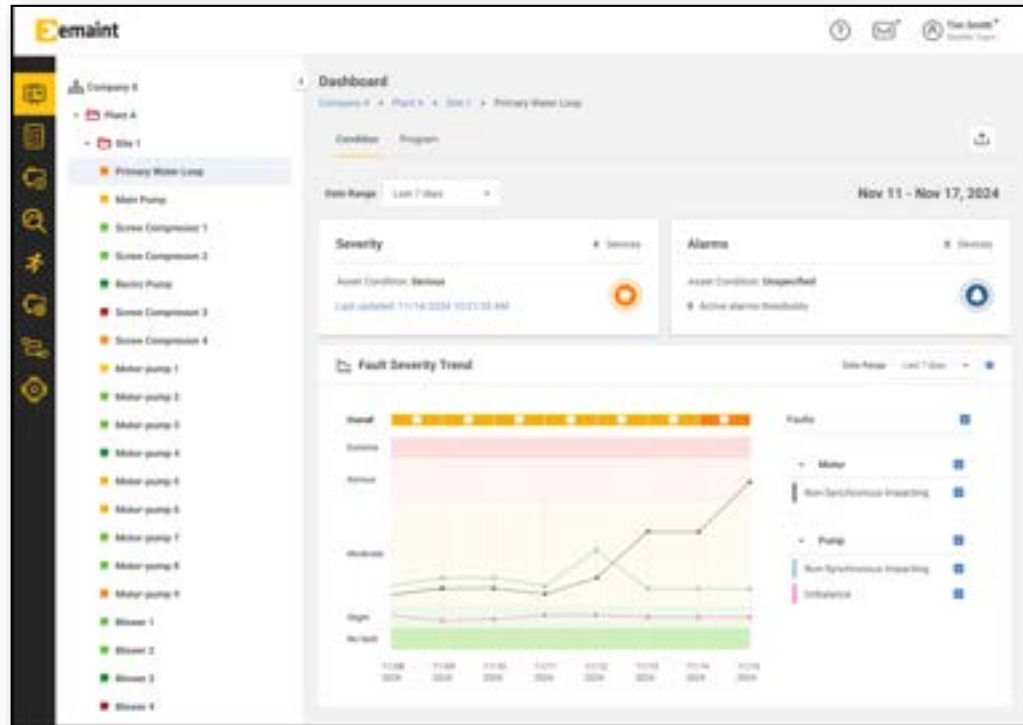


What is eMaint Condition Monitoring?

Empowering connected reliability through seamless integration of various condition monitoring hardware devices, eMaint Condition Monitoring (CM) transforms data into actionable insights and business metrics, ensuring machine health, reducing production risk, and demonstrating program performance with precision and simplicity.



eMaint CM – Delivering Scalable, Actionable Machinery Diagnostics



eMaint Condition Monitoring

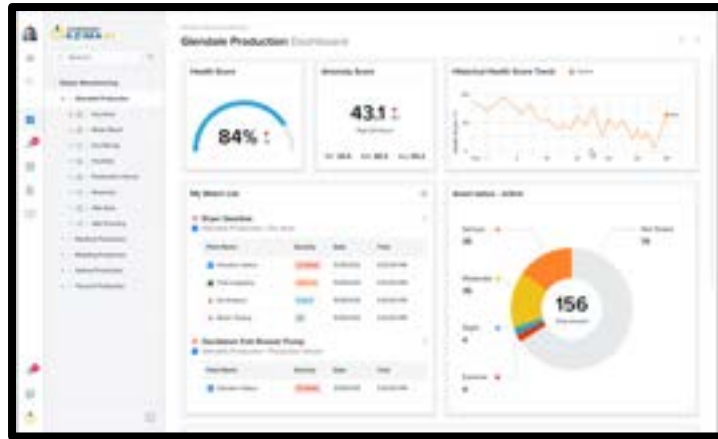
- Fluke Reliability best-in-class **automated machinery diagnostics** and actionable recommendation user interface for multiple hardware sources
- **Business metrics** for all organizational stakeholders and key decision makers
- **Early-detection and emerging fault trends** proving ample to time for parts ordering and repair planning
- **Prioritized, component-level repair actions** with assigned users, WO tracking, action follow-up with root causes and business impacts
- **Scalable, professional expertise** through data management, volumetric analysis, SME support, and portal delivery

Watchman Service Solutions through eMaint Condition Monitoring



- **Multiple hardware devices:** Results from wireless sensors, portable collectors and permanently installed acquisition devices
- **Automated and reviewed diagnostics:** Prioritized repair actions, component-level fault with severity and trend lines, automated diagnostic confidence rating, by component grouping, human analyst commentaries, diagnostic history, scalable for volumes of data and management of daily service priorities
- **Data Visualizations:** Scalars / overall trend/alarm lines, multiple selection, auto-scrolling, spectra, waveform, demodulation, harmonic / subharmonic / sideband / delta cursors, cascade/waterfall, zoom, markers, x axis linking
- **Service Automation Tools:** Rapid time to value with automation setup tools for baselining, component frequency discovery, threshold setting, quick review analysis, persistence logic.
- **Wireless Vibration Management:** Wireless device assignment and setup, Is-running settings, alarm trends and threshold settings, online/offline status and alerts and notifications
- **Professional Assistance:** Get expert analysis services on the terms that makes the most economical sense.

PredictivePortal Replacement for Wireless



PredictivePortal



Watchman Reliability Portal

Wireless System Focus

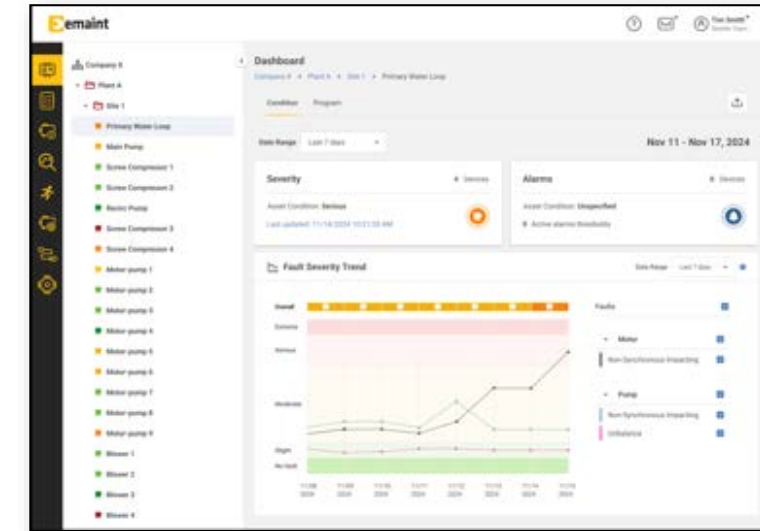
eCM 4.0

- Primary features and dashboards
- EA integration
- Basic machine template setup
- Automated diagnostics and reviewed results delivery
- User Role Management

eCM 4.1

- Advanced features and dashboards
- Treon Connect integration and new features
- Advanced machine template setup
- Hardware device management

Portable & Online System Focus



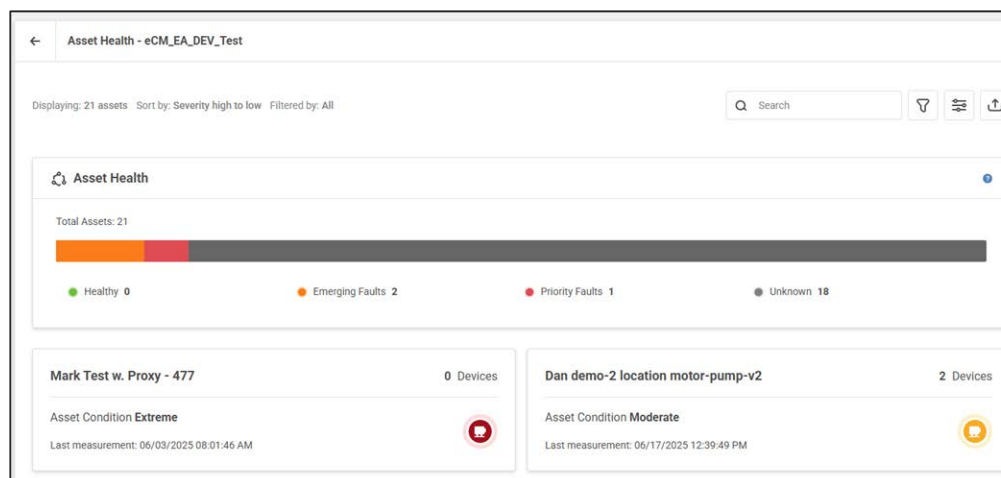
eMaint Condition Monitoring

eCM future

Single CM application solution stack to support all CM setup, HW devices analysis, AI features, integration and results / metrics delivery to all users connecting analysts to all business decision makers



Dashboards and Metrics

- Assets Alarm Status Bar Chart
- Asset Health Bar Chart
- Assets Alarm Status Trend Plot
- Asset Health Card
- Asset Alert Card
- Fault Severity Trend





Asset Management

- Detailed Device Information
- Detailed Asset Information
 - Minimum. Compliance Periodicity (view)
 - Asset Photos (Multiple)
 - Asset driver speed
 - Speed variation
 - CMMS link
 - Power
 - Foundation
 - Orientation
 - Custom Description
- Visual Component Configuration

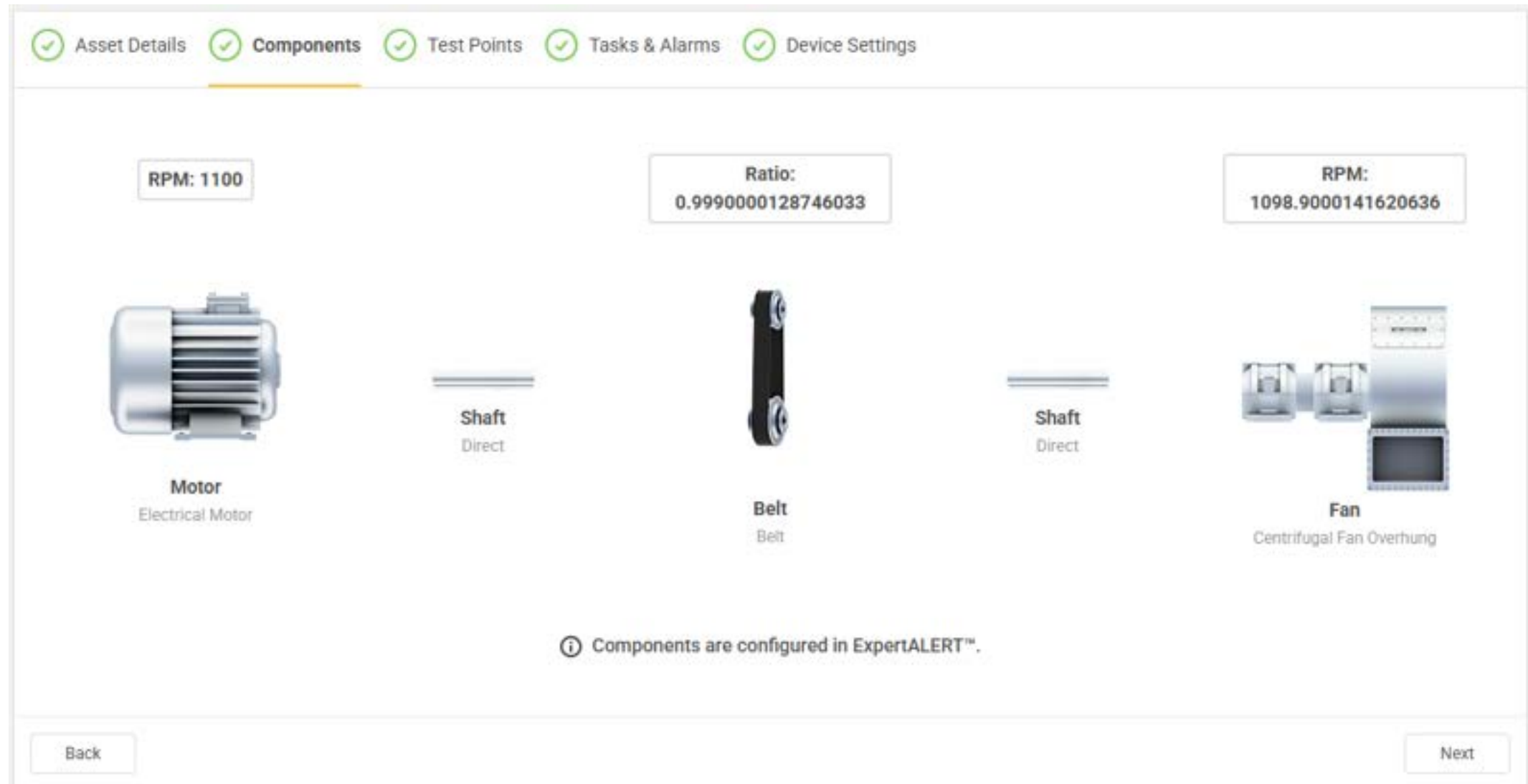


01500-85636 3TAB RTO Fan

Diagnostics
Events
Devices
Asset Details

Asset Name	Driver speed [RPM]	Variation [%]
01500-85636 3TAB RTO Fan	1100	Not available
Asset ID (CMMS ID)	Power [kW]	
12345	69.00	
Description	Foundation	
Big ol' Fan. Important for makin g \$\$\$	Rigid	
Periodicity Type	Asset Orientation	
Not available	Horizontal	

Visual Component Configuration



eCM 4.0 Live Demo

Take Control of Maintenance Operations

Too much time in plant, overwhelming volume of data, high-skill requirements



Focused results, advanced automation, risk projections, extended team, transparency



POLL QUESTION No. 2



What is your biggest take-away from today's presentation?
(Click only one answer)

- I like the ability to get more people involved, including partners.
- I like the ability to present metrics broadly across my organization.
- I like the ability to interface with data to drive my own decision making.
- I don't think this currently would benefit me.

QUESTIONS?



Thank you!

Michael DeMaria

michael.demaria@fluke.com

Austin Anderson

austin.anderson@fluke.com



FLUKE®

Reliability

THANK YOU!